

TWIN WAN VPN GATEWAY

Model XC-DPG503



- Plug TWO Internet connections to increase your bandwidth
- Maintain your network uptime with two redundant Internet connections
- IPSec Gateway-to-Gateway VPN security and failover
- SPI Firewall security to protect your network

Overview

The XINCOM XC-DPG503 is a dual WAN Internet gateway that allows you to connect two Internet connections such as Cable and DSL for ultimate redundancy and increased bandwidth. Using two Internet connection types in any combination provides maximum up-time for your network while load balancing uses both connections concurrently to increase your network's total bandwidth. Built-in IPSec encryption provides secure LAN-to-LAN connectivity over the Internet with support for up to 30 IPSec tunnels. The XC-DPG503 also provides VPN Auto Failover when connected with another XC-DPG503. Additional features like NAT, SPI Firewall, DHCP server and Access Filters makes the XC-DPG503 an all-in-one solution for any small business network.

Features & Benefits

2 x 10/100 WAN Ports: The XC-DPG503 incorporates dual 10/100 WAN ports, complete with auto-crossover for easy connection to an existing network. All popular DSL and Cable Modems and connection methods are supported, including Fixed IP, Dynamic IP, PPPoE, even multiple-session PPPoE.

4-Port 10/100 Switch: The XC-DPG503 incorporates a 4-port 10/100 N-Way Ethernet Switch, complete with auto-crossover for easy connection to an existing network.

VPN Security: Full VPN Endpoint with support for up to 30 VPN tunnels using the IPsec encryption protocol.

VPN Failover: Two XC-DPG503 gateways that establish a virtual private network will provide VPN failover by constantly monitoring an active link between endpoints. In the event of a VPN tunnel failing, the XC-DPG503 attempts to re-establish the tunnel. If the retry is unsuccessful, the Gateway then uses the second WAN port and the VPN tunnel is once again re-established.

SPI Firewall: Protects your network using advanced Stateful Packet Inspection against unwanted access from the outside along with malicious hackers, DoS and DDoS attacks.

Load Balancing: Allows you to use both WAN ports simultaneously, increasing your available bandwidth. You can set load balance type by Packets, Bytes RX+TX, Sessions and IP Address.

Advanced NAT Features: Access Filters, DMZ, DDNS, Remote Management, Dynamic or Static Routing, Special Applications, URL blocking, Virtual Servers, SNMP. Supports up to 100,000 concurrent sessions.

DHCP Server: The built-in DHCP server assigns up to 253 dynamic IP addresses.

Access Filter: Gain fine control over the Internet access and applications available to LAN users. Five (5) user groups are available, and each group can have different access rights.

Multi DMZ: Fully supports situations where your ISP allocates multiple IP addresses, up to 8 static IP addresses per port.

Transparent Bridge Mode: Used when you would like to locate a firewall or a server behind the router while utilizing the routers load balancing and automatic failover function. Supports multiple IP addresses through the ARP proxy.

Remote Management: Full configuration of the router through the internet, you can even upload updated firmware.

Special Applications: Used for applications where the port number used for the response is different to the port number used by the sender. Such as online games and chats.

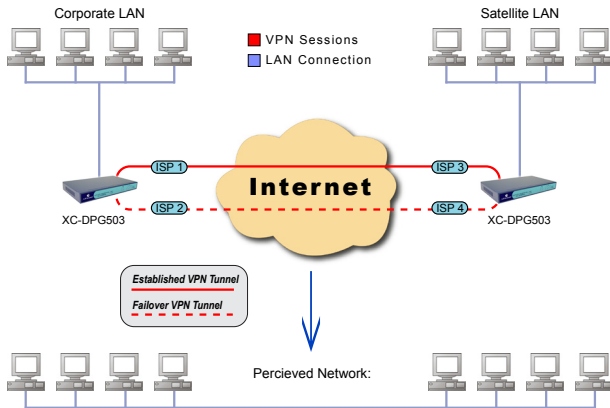
URL Blocking: Block access to undesirable Web sites by LAN users.

Virtual Servers: Allow Internet users to access Internet servers on your LAN. Easy configuration of standard servers such as Web, FTP or E-Mail servers, plus the ability to define you own Server types if required.

Dynamic DNS: Dynamic DNS allows use of a Domain name even with a dynamic IP address.

QoS: QoS allows you to schedule and direct network traffic to speed up critical applications..

UPnP: Universal plug and play for easy connectivity making it more user friendly.

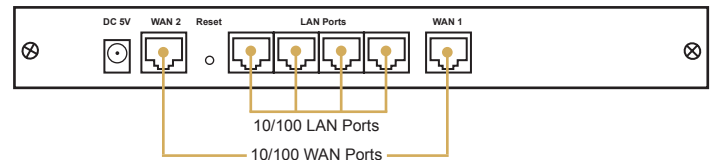


How it works:

Basic VPN setup with the 503 gateway:

The 503 VPN Gateways serve as VPN endpoints with Auto Failover capabilities. This creates a secure tunnel and redundant connectivity for a Virtual Private Network.

Rear Panel:



Technical Specifications

| | |
|-----------------------------------|--|
| WAN: | 2-port 10/100 Mbps RJ45 Auto-MDI/MDIX; 802.3/802.3u |
| LAN: | 4-port 10/100Mbps RJ45 Auto-MDI/MDIX; 802.3/802.3u |
| Throughput: | 50 MBits/sec |
| Load Balance & Backup: | Outbound load balance by bytes, packet, sessions & IP Address Auto backup connection |
| Protocols: | Security: NAT, UPAP, CHAP Network: TCP/IP, DHCP, PPP, UPAP, PPPoE, Multi-session PPPoE Routing: static route for WAN & LAN, ICMP, ARP Proxy, HTTP, RIP I/II Connection: static IP, dynamic IP, PPPoE, PPTP |
| VPN: | IPSec Tunnels: 30 Encryption: DES(56-bit), 3DES(168-bit), & AES(128-bit) Authentication: MD5, SHA1, SHA2 Manual key & IKE(Internet Key Exchange) VPN throughput: 10 Mbps |
| Firewall: | Stateful Packet Inspection NAT (Network Address Translation) NAPT (Network Address Port Translation) DoS (Denial of Service) Access control by group Ping to Death ICMP filter for WAN Packet filter URL block |
| Security: | Admin passwords Authentication with UPAP and CHAP for PPPoE |

| | |
|-------------------------------|---|
| Management: | Management through WAN & LAN port HTTP web based management Email alert of disconnection |
| Firmware Upgrade: | HTTP web based download TFTP download |
| Applications: | Support MSN & Net meeting Support with H.323 VoIP products Multi-session PPPoE SMTP bind SNMP NAT status & connection list Virtual server Multi-DMZ MTU changeable for WAN Dial-on-demand & Auto-disconnect Dynamic DNS MAC address clone Transparent Bridge Mode |
| Hardware: | RISC 170 Mhz Processor 1Mb Flash memory 16Mb RAM |
| Supported OS: | Win98 / Win2000 / WinMe / WinXP / MAC / Linux |
| Power: | External Power Adapter (5Vdc@1A) |
| Operating Environment: | 32°F (0°C) to 104°F (40°C) |
| Storage Temperature: | 14°F (-10°C) to 158°F (70°C) |
| Certification: | FCC Class B; CE |
| Dimensions/Weight: | 9.63in / 244mm (W) x 5.63in / 143mm (D) x 1.18in / 30mm (H) / 1.15lbs / 521g (wt.) |

About XINCOM

XINCOM is an innovator of out-of-the-box network solutions that address the needs of small to medium enterprises; broadband and IT service providers; and SOHO as well residential customers worldwide. XINCOM's mission is to provide our customers with the most cost-effective, innovative and easy-to-operate broadband networking solutions that meet their changing needs at the least possible cost to them.

Specifications and information are subject to change without notice. The XINCOM logo and division name are trademarks of XINCOM, LLC in the United States and/or certain other countries. Copyright © 2008 XINCOM, LLC. All rights reserved.

XINCOM, LLC

821 NW Flanders Ave.
Suite 335
Portland, OR 97209, USA

Tel: +1 503 980-1444
Fax: +1 503 218-8997
Email: info@xincom.com
Web: www.xincom.com