

TWIN WAN DNS/IP VPN GATEWAY Model XC-DPG603



- Plug TWO Internet connections to increase your bandwidth
- Maintain your network uptime with two redundant Internet connections
- IPSec Gateway-to-Gateway VPN security with aggregation and failover
- Increased reliability for hosted servers in your network
- SPI Firewall security to protect your network

Overview

The XINCOM XC-DPG603 is an advanced dual WAN Internet gateway that allows you to connect two Internet connections such as Cable or DSL for ultimate redundancy and increased bandwidth for your small business environment. Load balancing your two Internet connections increases the available bandwidth when both connections are active. The XC-DPG603 built-in IPSec VPN permits two secure sessions to effectively work as single tunnel and combine VPN traffic over two Internet connections to a branch office with another XC-DPG603. The Authoritative Name Server feature load balances incoming data traffic from the Internet to your server. With additional features like NAT, SPI Firewall, DHCP server and Access Filters makes the XC-DPG603 an all-in-one solution for any small business network.

Features & Benefits

Built-in VPN Security: The XC-DPG603 is a VPN capable Dual WAN VPN Gateway with industry standard IPsec encryption. It provides extremely secure LAN-to-LAN connectivity with the use of two concurrent VPN tunnels over two broadband connections. The XC-DPG603 will aggregate traffic requests while providing full redundancy with automatic failover. VPN security is supported by encryption, encapsulation, and authentication using the following methods: DES/3DES/AES, MD5, SHA-1 and SHA-2; up to 30 IPsec tunnels are permitted.

VPN Aggregation: VPN trunking permits two separate and concurrent VPN tunnels provides faster throughput between your Virtual Private Network.

Authoritative DNS-to-IP: The XC-DPG603 is an authoritative DNS to IP gateway that resolves a domain name to its respective IP addresses. This new capability allows for inbound *failover* and *load balancing* for servers located behind the gateway. Using dual WAN ports simultaneously increases available bandwidth for both uploads and download requests. You can set load balance type by Packets, Bytes rx+tx, Sessions, & IP Addresses.

Multiple Connection Methods: All popular DSL and Cable Modems and connection methods are supported, including Fixed IP, Dynamic IP, PPPoE, even multiple-session PPPoE.

4-Port 10/100 Switch: The XC-DPG603 incorporates a 4-port 10/100 N-Way Ethernet Switch, complete with auto-crossover for easy connection to an existing network.

SPI Firewall: Protects your network using advanced Stateful Packet Inspection against hackers and DDoS attacks.

Advanced NAT Features: Access Filters, DMZ, DDNS, Remote Management, Dynamic or Static Routing, Special Applications, URL blocking, Virtual Servers, SNMP.

Access Filter: Gain fine control over the Internet access and applications available to LAN users. Five (5) user groups are available, and each group can have different access rights.

Multi DMZ: Fully supports situations where your ISP allocates multiple IP addresses, up to 8 static IP addresses per port.

Remote Management: Full configuration of the router through the internet, you can even upload updated firmware.

Special Applications: Used for applications where the port number used for the response is different to the port number used by the sender. Such as online games and chats.

URL Blocking: Block access to undesirable Web sites by LAN users.

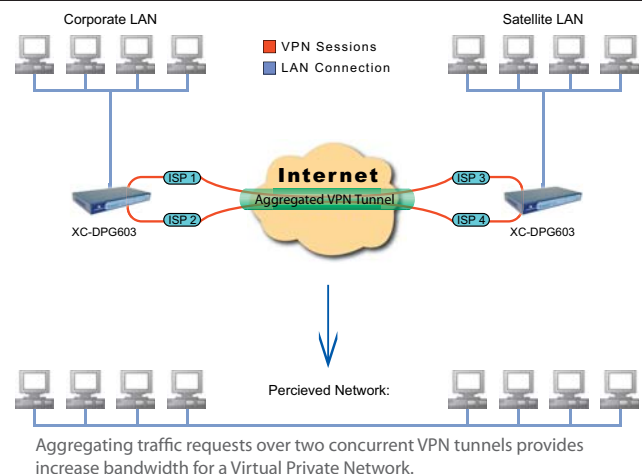
Virtual Servers: Allow Internet users to access Internet servers on your LAN. Easy configuration of standard servers such as Web, FTP or E-Mail servers, plus the ability to define you own Server types if required.

Dynamic DNS: Dynamic DNS allows use of a Domain name even with a dynamic IP address.

QoS: QoS allows you to schedule and direct network traffic.

UPnP: Universal Plug and Play for easy connectivity making it more consumer oriented.

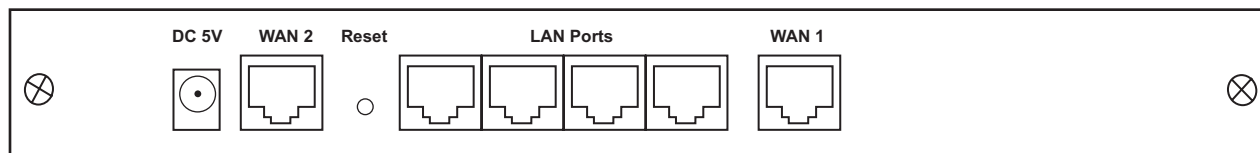
How it works: Aggregating two concurrent VPN tunnels



Technical Specifications

WAN:	2-port 10/100 Mbps RJ45 Auto-MDI/MDIX; 802.3/802.3u	Management:	Management through WAN & LAN port HTTP web based management Email alert of disconnection
LAN:	4-port 10/100Mbps RJ45 Auto-MDI/MDIX; 802.3/802.3u	Firmware Upgrade:	HTTP web based download TFTP download
Throughput:	50 MBits/sec	Applications:	Support MSN & Net meeting Support with H.323 VoIP products Multi-session PPPoE SMTP bind SNMP NAT status & connection list Virtual server Multi-DMZ MTU changeable for WAN Dial-on-demand & Auto-disconnect Dynamic DNS MAC address clone Transparent Bridge Mode
Load Balance & Backup:	Inbound & Outbound load balance by bytes, packet, session, & IP Address Auto backup connection	Hardware:	RISC 170 Mhz Processor 1Mb Flash memory 16Mb RAM
Protocols:	Security: NAT, UPAP, CHAP Network: TCP/IP, DHCP, PPP, UPAP, PPPoE, Multi-session PPPoE Routing: static route for WAN & LAN, ICMP, ARP Proxy, HTTP, RIP I/II Connection: static IP, dynamic IP, PPPoE, PPTP	Supported OS:	Win98 / Win2000 / WinMe / WinXP / MAC / Linux
VPN:	IPSec Tunnels: 30 Encryption: DES(56-bit), 3DES(168-bit), & AES(128-bit) Authentication: MD5, SHA1, SHA2 Manual key & IKE(Internet Key Exchange) VPN throughput: 10 Mbps	Power:	External Power Adapter (5Vdc@1A)
Firewall:	Stateful Packet Inspection NAT (Network Address Translation) NAPT (Network Address Port Translation) DoS (Denial of Service) Access control by group Ping to Death ICMP filter for WAN Packet filter URL block	Operating Environment:	32°F (0°C) to 104°F (40°C)
Security:	Admin passwords Authentication with UPAP and CHAP for PPPoE	Storage Temperature:	14°F (-10°C) to 158°F (70°C)
		Certification:	FCC Class B; CE
		Dimensions/Weight:	9.63in / 244mm (W) x 5.63in / 143mm (D) x 1.18in / 30mm (H) / 1.15lbs / 521g (wt.)

Rear Panel



About XINCOM

XINCOM is an innovator of out-of-the-box network solutions that address the needs of small to medium enterprises; broadband and IT service providers; and SOHO as well residential customers worldwide. XINCOM's mission is to provide our customers with the most cost-effective, innovative and easy-to-operate broadband networking solutions that meet their changing needs at the least possible cost to them.

Specifications and information are subject to change without notice. The XINCOM logo and division name are trademarks of XINCOM, LLC in the United States and/or certain other countries. Copyright © 2007 XINCOM, LLC. All rights reserved.

XINCOM

421 SW Sixth Ave, Suite 1000
Hubbard, OR 97204 USA
Tel: +1 503 980-1444
Fax: +1 503 218-8997
Email: info@xincom.com
Web: www.xincom.com