

# Using the TFTP Utility

The DPG402 Twin WAN Router supports the Trivial File Transfer Protocol (TFTP). This is mainly used to upload the firmware to the device. It can also be used to save and upload the configuration and reset the router to defaults. This guide will show you how to perform all those actions along with the proper procedure for upgrading your DPG402 to the latest firmware release.

## Updating the Firmware

To update the firmware on you DPG402 you must first download the firmware from the XiNCOM Support webpage (<http://www.xincom.com/support>)

You will need an unzipping utility such as WinZip ([www.winzip.com](http://www.winzip.com)) or WinRAR ([www.rarlab.com](http://www.rarlab.com)) to extract the contents of the file. Included will be a Read-me file (usually README.txt), TFTP (tftp.exe) utility and the firmware file (XC95xxx\_xxxxxx\_Full.bin).

## Backup your configuration

When you update the firmware on the DPG402 the default configuration overwrites any settings that you previously entered into the router. You will need to save the configuration of the file to the router. There are two ways to do this, the TFTP utility and the HTTP user interface. This section covers only the TFTP utility, you can learn how to update using the HTTP utility in the Admin Control section.

To save DPG402 Configuration to a file:

1. Open the TFTP utility by double clicking on it.
2. Enter the routers IP address (Default is: 192.168.1.1)
3. Enter a file name that you would like to save the file as (Example: config-file.bin).
4. Press the *Upload* button and the file will be saved to the same directory as the TFTP utility.

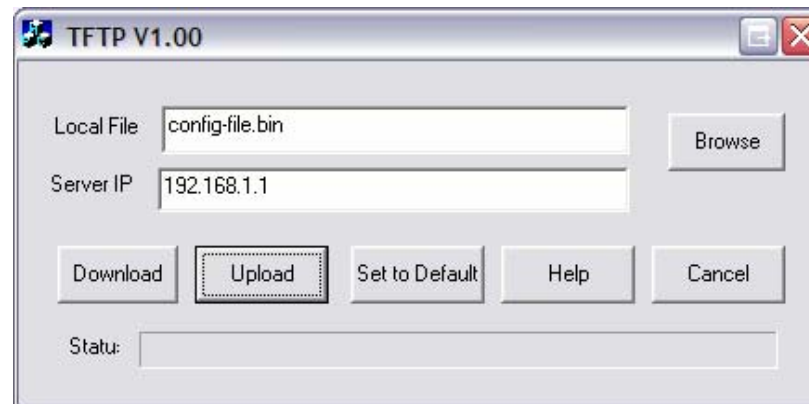


Figure 1: Example of how to configure to save to file.

## Uploading the Firmware

Using the TFTP utility you are able to update the firmware on the DPG402, this is useful when you also need to recover the router from a crash.

To upload the firmware to the router:

1. Open the TFTP utility by double-clicking on it.
2. Enter the routers IP address (Default is: 192.168.1.1)
3. Click the *Browse* button and select the firmware file.
4. Click the *Download* button. It could take up to 1 to 3 minutes to upload the firmware, after which the router will reboot.

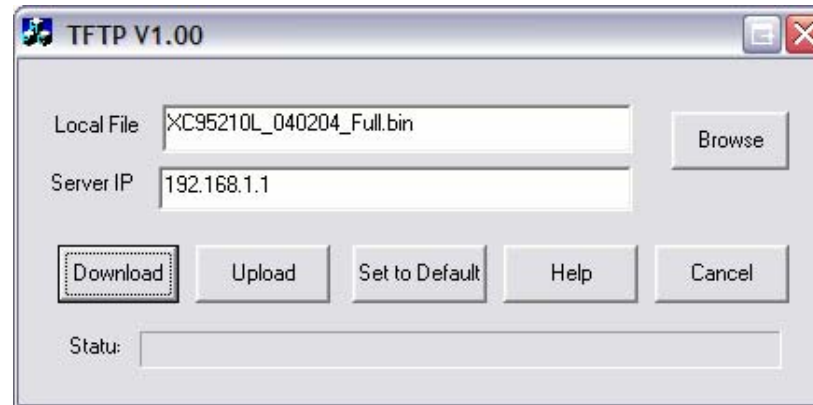


Figure 1: Example of how to configure to upload firmware.

## Restoring Saved Configuration

Once you have updated your firmware you are able to upload previously saved configuration.

To upload previously saved configuration:

1. Open the TFTP utility by double-clicking on it.
2. Enter the routers IP address (Default is: 192.168.1.1)
3. Click the *Browse* button and select the configuration file.
4. Click the *Download* button. It could take up to 1 to 3 minutes to upload the configuration, after which the router will reboot.

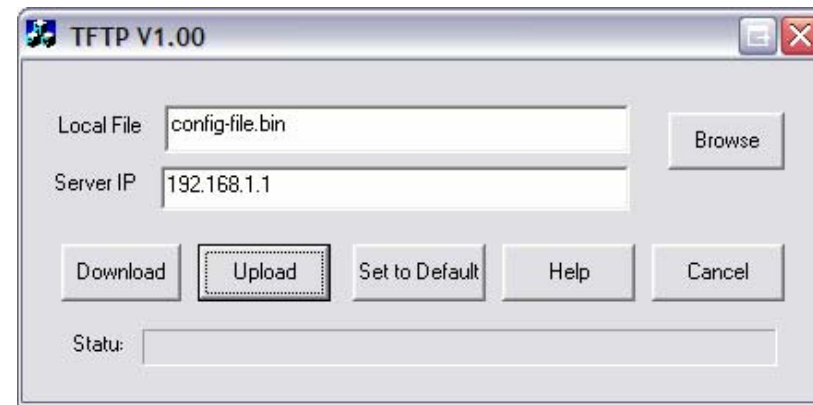


Figure 1: Example of how to configure to upload previously saved configuration.