



Model X16-R

- **smart** load balancing
- **smart** security
- **smart** networking

## Features

### Multiple WAN Ports and High Availability

Connect up to 8 broadband connections to your network and increase your total bandwidth while ensuring you always remain connected to the Internet.

### Smart Load Balancing

Multiple load balancing methods allow you to maximize bandwidth across different broadband connections and fine tune your LAN environment.

### QoS (Quality of Service)

The X16-R supports QoS for controlling traffic priority for your network. Improve the quality of your Voice Over IP calls or give priority to critical applications.

### Stateful Packet Inspection Firewall

Protect and secure your network and mission critical applications from malicious intruders and DDoS attacks.

### Access Filter

Gain fine control over the Internet access and applications available to LAN users. Up to five (5) user groups are available with each group having different access rights to networking services.

### Advanced NAT Features

Access Filters, DMZ, DDNS, Remote Management, Dynamic or Static Routing, Special Applications, URL blocking, Virtual Servers, SNMP.

### Virtual Servers

Allow Internet users to access Internet servers on your LAN. Easy configuration of standard servers such as Web, FTP or E-Mail servers, plus the ability to define your own Server types if required.

## X16-R

### Multi-WAN Broadband Gateway

The XINCOM X16-R is an advanced 16-Port Internet gateway that provides scalable bandwidth and reliable Internet connectivity for a small to medium business environment. Up to eight (8) different Internet connections can be plugged into the X16-R to expand your network's bandwidth capacity and provide high connection availability to make sure your network always remain connected to the Internet. With support for multiple Internet connection types in any combination provides maximum compatibility and up-time. The X16-R's built-in full-duplex networking switch provides Internet-sharing services for flexible setups with multiple computers in your network. With additional features like NAT, SPI Firewall, DHCP server and Access Filters makes the X16-R is an all-in-one solution for any small business network.

## Benefits

### ● Scalable Bandwidth

Connecting up to eight (8) different Internet connections to expand your network's bandwidth capacity.

### ● Reliable Internet Connectivity

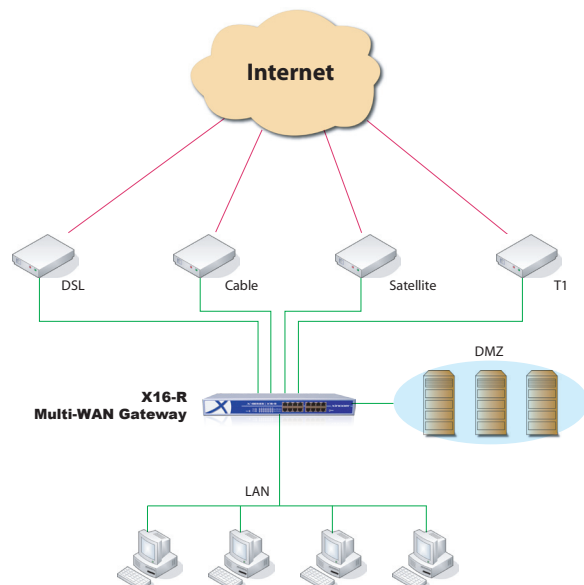
Utilize multiple broadband connections for ultimate connection redundancy and reliability with seamless Automatic Failover services.

### ● Solid Security

High performance NAT gateway & SPI firewall protects your network from malicious attacks.

### ● Easy Setup & Management

Easily configure the Multi-WAN Broadband Gateway into your existing network with flexible management applications.



Connect up to eight (8) different broadband services for ultimate connection availability and aggregated bandwidth for your network. In the event one connection type failing, the remaining broadband connections will continuously provide connectivity to the Internet and remote networks.

## Software Specifications

### Firewall

- Maximum Throughput: 90 Mb/sec
- Maximum Concurrent Sessions: 80,000
- NAT (Network Address Port Translation)
- DoS (Denial of Service)
- Access Control by Group
- Ping to Death
- Port Scan
- SPI (Stateful Packet Inspection)
- ICMP Filter for WAN
- Packet Filter
- URL Block (black & white listing)
- Session Limit
- System Filter Exception
- QoS (Quality of Service)

### Protocols

- Security: NAT, UPAP, CHAP
- Network: TCP/IP, HTTP, DHCP, PPP, UPAP, Multi-session PPPoE, ARP Proxy
- Routing: Static Route, RIP I & II
- Connection: Static/Dynamic IP, PPPoE, & PPTP

### Load Balancing & Backup

- Auto Failover Connection
- Outbound Load Balance by:
  - least load:
    - Byte
    - Packet
    - Session
    - IP Address
  - auto-learning
  - priority
  - round robin
  - weight round robin

### Management & Security

- Management via WAN & LAN port
- web based remote management via HTTP
- SNMP
- Email Alert
- Syslog
- Admin passwords
- Authentication with UPAP & CHAP for PPPoE

### Application

- Support MSN & Netmeeting
- Support with H.323 VoIP products
- Multi-session PPPoE
- SMTP bind
- UPnP
- Virtual server
- Multi-DMZ
- Dynamic DNS
- NAT status & connection list & alias
- MTU changeable for WAN
- Dial-on-demand & Auto-disconnect
- MAC address clone
- Transparent Bridge Mode
- DNS Loopback
- Any IP on LAN

### Firmware Upgrade

- HTTP web based download
- TFTP download

## Hardware Specifications

### Interfaces

- WAN Ports: 2-8 ports (8 maximum)
  - 10/100 Mbps RJ-45
  - Auto-MDI/MDIX; 802.3/802.3u
- LAN Ports: 8-14 ports (14 maximum)
  - 10/100 Mbps RJ-45
  - Auto-MDI/MDIX; 802.3/802.3u

### LEDs

- One (1) Power LED for power indication
- WAN (Link/Act) LEDs for WAN port status
- LAN (Link/Act) LEDs for LAN port status

### Operating environment

0°C ~ 40°C (32°F ~ 104°F)

### Dimensions

440 x 142 x 44 mm (W x D x H) (1U, 19")

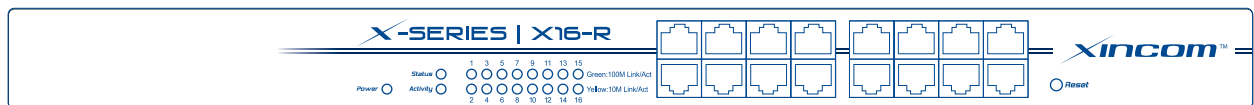
### Power

Internal power 5V/2A (AC Power Cable)

### Certification

CE Mark  
FCC part 15 class A

## Front Interface



### About XINCOM

XINCOM is an innovator of out-of-the-box network solutions that address the needs of small to medium enterprises; broadband and IT service providers; and SOHO as well residential customers worldwide. XINCOM's mission is to provide our customers with the most cost-effective, innovative and easy-to-operate broadband networking solutions that meet their changing needs at the least possible cost to them.

Specifications and information are subject to change without notice. The XINCOM logo and division name are trademarks of XINCOM, LLC in the United States and/or certain other countries. Copyright © 2008 XINCOM, LLC. All rights reserved.

### XINCOM, LLC

821 NW Flanders Ave.  
Suite 335  
Portland, OR 97209, USA

Tel: +1 503 980-1444  
Fax: +1 503 218-8997  
Email: info@xincom.com  
Web: www.xincom.com