

TWIN WAN ROUTER

Model XC-DPG502



- Plug **TWO** Internet connections to increase your bandwidth
- Maintain your network uptime with two redundant Internet connections
- SPI Firewall security to protect your network

Overview

The XC-DPG502 is a dual WAN networking router that allows you to connect **two** Internet connections such as broadband Cable and DSL into one device for ultimate redundancy and increased bandwidth for your small business network. Using two Internet connection types in any combination provides maximum up-time for your network while load balancing uses both connections concurrently to increase your network's total bandwidth. With additional features like NAT, SPI Firewall, DHCP server and Access Filters makes the XC-DPG502 a must-have all-in-one solution for any small business network.

Features & Benefits

Multiple Connection Methods: All popular DSL and Cable Modems and connection methods are supported, including Fixed IP, Dynamic IP, PPPoE, even multiple-session PPPoE.

4-Port 10/100 Switch: The XC-DPG502 incorporates a 4-port 10/100 N-Way Ethernet Switch, complete with auto-crossover for easy connection to an existing network.

SPI Firewall: Protects your network using advanced Stateful Packet Inspection against hackers and DDoS attacks.

Load Balancing: Allows you to use both WAN ports simultaneously, increasing your available bandwidth. You can set load balance type by Packets, Bytes rx+tx, Sessions, and IP Address

Advanced NAT Features: Access Filters, DMZ, DDNS, Remote Management, Dynamic or Static Routing, Special Applications, URL blocking, Virtual Servers, SNMP.

Access Filter: Gain fine control over the Internet access and applications available to LAN users. Five (5) user groups are available, and each group can have different access rights.

Multi DMZ: Fully supports situations where your ISP allocates multiple IP addresses, up to 8 static IP addresses per port.

Remote Management: Full configuration of the router through the Internet including firmware updates.

Special Applications: Used for applications where the port number used for the response is different to the port number used by the sender such as online games and chats.

URL Blocking: Block access to undesirable Web sites by LAN users.

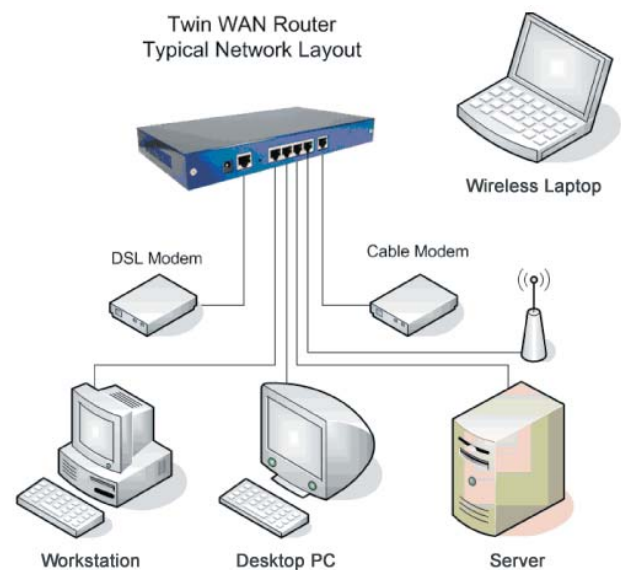
Virtual Servers: Allow Internet users to access Internet servers on your LAN. Easy configuration of standard servers such as Web, FTP or E-Mail servers, plus the ability to define your own Server types if required.

Dynamic DNS: Dynamic DNS allows use of a Domain name even with a dynamic IP address.

QoS: QoS allows you to schedule and direct network traffic.

UPNP: Universal plug and play for easy connectivity making it more consumer oriented.

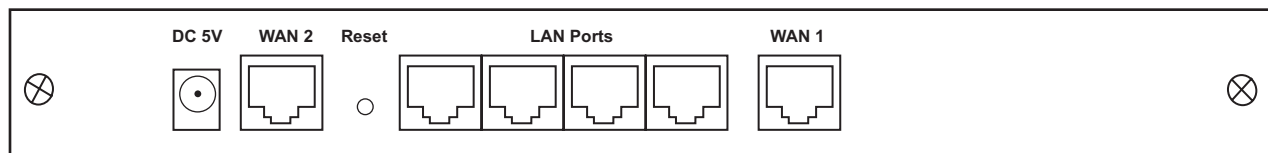
How it works:



Technical Specifications

WAN:	2-port 10/100 Mbps RJ45 Auto-MDI/MDIX; 802.3/802.3u	Firmware Upgrade:	HTTP web based download TFTP download
LAN:	4-port 10/100Mbps RJ45 Auto-MDI/MDIX; 802.3/802.3u	Applications:	Support MSN & Net meeting Support with H.323 VoIP products Multi-session PPPoE SMTP bind SNMP NAT status & connection list Virtual server Multi-DMZ MTU changeable for WAN Dial-on-demand & Auto-disconnect Dynamic DNS MAC address clone Transparent Bridge Mode
Throughput:	50 MBits/sec	Hardware:	RISC 170 Mhz Processor 1Mb Flash memory 16Mb RAM
Load Balance & Backup:	Outbound load balance by bytes, packet, session, & IP Address Auto backup connection	Supported OS:	Win98 / Win2000 / WinMe / WinXP / MAC / Linux
Protocols:	Security: NAT, UPAP, CHAP Network: TCP/IP, DHCP, PPP, UPAP, PPPoE, Multi-session PPPoE Routing: static route for WAN & LAN, ICMP, ARP Proxy, HTTP, RIP I/II Connection: static IP, dynamic IP, PPPoE, PPTP	Power:	External Power Adapter (5Vdc@1A)
VPN:	Pass through support for IPSEC, PPTP, and L2TP PPTP client	Operating Environment:	32°F (0°C) to 104°F (40°C)
Firewall:	Stateful Packet Inspection NAT (Network Address Translation) NAPT (Network Address Port Translation) DoS (Denial of Service) Access control by group Ping to Death ICMP filter for WAN Packet filter URL block	Storage Temperature:	14°F (-10°C) to 158°F (70°C)
Security:	Admin passwords Authentication with UPAP and CHAP for PPPoE	Certification:	FCC Class B; CE
Management:	Management through WAN & LAN port HTTP web based management Email alert of disconnection	Dimensions/Weight:	9.63in / 244mm (W) x 5.63in / 143mm (D) x 1.18in / 30mm (H) / 1.15lbs / 521g (wt.)

Rear Panel



About XINCOM

XINCOM is an innovator of out-of-the-box network solutions that address the needs of small to medium enterprises; broadband and IT service providers; and SOHO as well residential customers worldwide. XINCOM's mission is to provide our customers with the most cost-effective, innovative and easy-to-operate broadband networking solutions that meet their changing needs at the least possible cost to them.

Specifications and information are subject to change without notice. The XINCOM logo and division name are trademarks of XINCOM, LLC in the United States and/or certain other countries. Copyright © 2007 XINCOM, LLC. All rights reserved.

XINCOM

421 SW Sixth Ave, Suite 1000
Hubbard, OR 97204 USA
Tel: +1 503 980-1444
Fax: +1 503 218-8997
Email: info@xincom.com
Web: www.xincom.com